

DAVIS®

Q5 Price List

Designed by Jonathan Prestwich
Effective July 1, 2021



Q5 Lounge Series

Specifications	2
Images	3
SEATING	
Q5-1000.....	4
Q5-2000.....	4
TABLES	
Q5-3000.....	5
Q5-3100	5
Q5-3200	5
Q5-3300.....	6
Q5-3400.....	6



FEATURES

Connectors

Standard with connecting tables

Frame

Multi-density foam over a plywood frame construction
Q5-2000 and Q5-3300 Lounge Stools are weighted for stability

Glides

Adjustable glides are standard

Upholstery

Contrasting welt option offered. Must specify at time of order.
Davis Fabric and Leather Program or COM/COL

SEATING UNITS



Two Seater



Lounge Stool

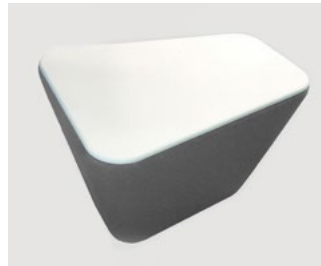
UPHOLSTERY DETAIL



TABLES



Freestanding Round Table



Freestanding Trapezoid Table



High Round Table



Connecting Table

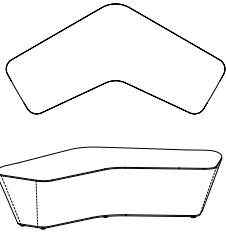


Large Round Table

Q5 Lounge Series

Example: item number **Q5-1000** = **Q5-1000**

Item	Description	Dimensions	w	inches		Yardage / Square Feet	Shipping Weight
				d	h		
Q5-1000	60° Shaped Two Seater	Outside	66 ⁵ / ₈	33 ⁵ / ₈	16 ³ / ₄	4 ¹ / ₂ yds. / 81 sq.ft.	110 lbs.



List Price
Grades

COM/COL	A	B	C	D	E	F	G	H	I	J	K	L
3132	3248	3364	3480	3596	3712	3828	3944	4060	4176	4292	4408	4524

Item	Description	Dimensions	w	inches		Yardage / Square Feet	Shipping Weight
				d	h		
Q5-2000	Lounge Stool	Outside	19	16 ⁵ / ₈	16 ³ / ₄	2 ¹ / ₄ yds. / 40 ¹ / ₂ sq. ft.	33 lbs.



List Price
Grades

COM/COL	A	B	C	D	E	F	G	H	I	J	K	L
1156	1200	1244	1288	1332	1376	1420	1464	1508	1552	1596	1640	1684

Required to Specify


Fabrics or Leather : Ensure graded in material or COM/COL is approved for use on Q5 by contacting Davis

TABLES

Q5 Lounge Series

Example: item number **Q5-3000** + wood suffix **-OA** = **Q5-3000-OA**


Item	Description	Dimensions	w	inches d	h
Q5-3000	Connecting Table	Outside	19 1/2	15 3/4	14 3/16



Cannot be freestanding or used as an end table.


List Price			
	-AA Ash	-OA Oak	-WW Walnut
	857	857	954

Item	Description	Dimensions	inches dia	h	Yardage / Square Feet	Shipping Weight
Q5-3100	Round Table Freestanding	Outside	27 3/4	15 1/4	1 1/2 yds. / 27 sq. ft.	54 lbs. Acrylic 44 lbs. Veneer



List Price		Grades												
	COM/COL	A	B	C	D	E	F	G	H	I	J	K	L	
-AA	Ash	1336	1373	1410	1447	1484	1521	1558	1595	1632	1669	1706	1743	1780
-OA	Oak	1336	1373	1410	1447	1484	1521	1558	1595	1632	1669	1706	1743	1780
-WW	Walnut	1336	1373	1410	1447	1484	1521	1558	1595	1632	1669	1706	1743	1780
-AY	Acrylic	1514	1551	1588	1625	1662	1699	1736	1773	1810	1847	1884	1921	1958

Item	Description	Dimensions	w	inches d	h	Yardage / Square Feet	Shipping Weight
Q5-3200	Trapezoid Table Freestanding	Outside	23	18 1/4	15 1/4	1 1/2 yds. / 27 sq. ft.	33 lbs. Acrylic 27 lbs. Veneer



List Price		Grades												
	COM/COL	A	B	C	D	E	F	G	H	I	J	K	L	
-AA	Ash	1056	1093	1130	1167	1204	1241	1278	1315	1352	1389	1426	1463	1500
-OA	Oak	1056	1093	1130	1167	1204	1241	1278	1315	1352	1389	1426	1463	1500
-WW	Walnut	1056	1093	1130	1167	1204	1241	1278	1315	1352	1389	1426	1463	1500
-AY	Acrylic	1105	1142	1179	1216	1253	1290	1327	1364	1401	1438	1475	1512	1549

Required to Specify

Fabrics or Leather : Ensure graded in material or COM/COL is approved for use on Q5 by contacting Davis - *only for Q5-3100 and Q5-3200*

<p>Top Finishes :</p> <p>Oak -OAK</p> <p>10 Alabaster White Oak</p> <p>11 Light Oak</p> <p>12 Golden Oak</p> <p>13 Harvest Oak</p> <p>14 Slate Oak</p> <p>15 Mineral Grey Oak</p> <p>16 Dark Oak</p>	<p>Walnut -WAL</p> <p>20 Clear Walnut</p> <p>21 Light Grey Walnut</p> <p>22 Classic Walnut</p> <p>23 Mocha Walnut</p> <p>24 Midnight Walnut</p>	<p>Acrylic -AY White</p> <p>Ash -AA</p> <p>30 Vanilla Ash</p> <p>31 Natural Ash</p> <p>32 Sand Ash</p> <p>33 Toasted Ash</p>
--	--	---

Q5 Lounge Series

Example: item number **Q5-3300** + wood suffix **-OA** = **Q5-3300-OA**

Item	Description	Dimensions	inches dia	h	Yardage / Square Feet	Shipping Weight
Q5-3300	High Round Table Freestanding	Outside	20	22 1/2	1 3/4 yds. / 31 1/2 sq. ft.	35 lbs. Acrylic 30 lbs. Veneer

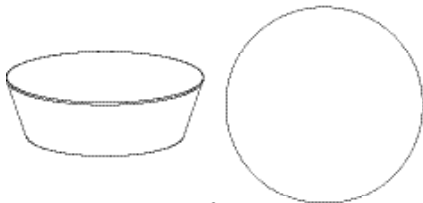


List Price

Grades
COM/COL

		COM/COL	A	B	C	D	E	F	G	H	I	J	K	L
-AA	Ash	1367	1418	1469	1520	1571	1622	1673	1724	1775	1826	1877	1928	1979
-OA	Oak	1367	1418	1469	1520	1571	1622	1673	1724	1775	1826	1877	1928	1979
-WW	Walnut	1367	1418	1469	1520	1571	1622	1673	1724	1775	1826	1877	1928	1979
-AY	Acrylic	1465	1516	1567	1618	1669	1720	1771	1822	1873	1924	1975	2026	2077

Item	Description	Dimensions	inches dia	h	Yardage / Square Feet	Shipping Weight
Q5-3400	LARGE Round Table Freestanding	Outside	48 1/4	15 1/4	2 1/2 yds. / 45 sq. ft.	126 lbs. Acrylic 96 lbs. Veneer



List Price

Grades
COM/COL

		COM/COL	A	B	C	D	E	F	G	H	I	J	K	L
-AA	Ash	2926	2999	3072	3145	3218	3291	3364	3437	3510	3583	3656	3729	3802
-OA	Oak	2926	2999	3072	3145	3218	3291	3364	3437	3510	3583	3656	3729	3802
-WW	Walnut	2926	2999	3072	3145	3218	3291	3364	3437	3510	3583	3656	3729	3802
-AY	Acrylic	3387	3460	3533	3606	3679	3752	3825	3898	3971	4044	4117	4190	4263

Required to Specify

Fabrics or Leather : Ensure graded in material or COM/COL is approved for use on Q5 by contacting Davis

Top Finishes :	Oak	-OAK	10 Alabaster White Oak	Walnut	-WAL	20 Clear Walnut	Acrylic	-AY	White
			11 Light Oak			21 Light Grey Walnut			
			12 Golden Oak			22 Classic Walnut	Ash	-AA	30 Vanilla Ash
			13 Harvest Oak			23 Mocha Walnut			31 Natural Ash
			14 Slate Oak			24 Midnight Walnut			32 Sand Ash
			15 Mineral Grey Oak						33 Toasted Ash
			16 Dark Oak						