



LEAF

Specifications	2
Images.....	3
Leaf 10	4
Leaf 20.....	4
Leaf 30.....	4
Leaf 40	5

For information concerning Condition of Sales, Warranty,
Fabric, Finishes, etc., please download the
Conditions of Sales.pdf on the
Davis web site: www.davisfurniture.com

SPECIFICATIONS

LEAF

Designed by 08/16 quergedacht

FEATURES

Wall anchors for mounting are included in set

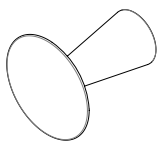
Wood knob is available in painted finishes or silver, gold and copper metallic leaf

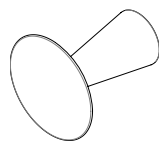
Paint or metallic leaf is only on the face of the coat hook. The base is painted white.

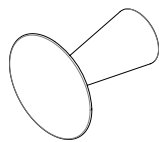


LEAF

Example: item number Leaf-10 + finish suffix -PT = Leaf-10-PT

Item	Description	Dimensions	w	inches d	Shipping Weight
Leaf 10	Coat Rack All Same (set of 4)	Outside	2 1/4	2 3/8	2 lbs. per set
 <p>Must specify paint and leaf color. See below.</p>					
List Price Selection		-PT Paint	-ML Metallic Leaf		
		323	387		

Item	Description	Dimensions	w	inches d	Shipping Weight
Leaf 20	Coat Rack Metallic (set of 4)	Outside	2 1/4	2 3/8	2 lbs. per set
 <p>NOTE: Package includes Copper, Gold, Silver and Painted White</p>					
List Price Selection		-ML Metallic Leaf			
		387			

Item	Description	Dimensions	w	inches d	Shipping Weight
Leaf 30	Coat Rack Fresh (set of 4)	Outside	2 1/4	2 3/8	2 lbs. per set
 <p>NOTE: Package includes, Grey, Orange, White, Yellow</p>					
List Price Selection		-PT Paint			
		323			

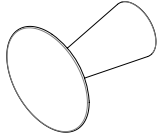
Required to Specify - only for Leaf 10

Finishes :	-PT Painted	Leaf-Black	Leaf-Orange	-ML Metallic Leaf	Copper
		Leaf-Blue	Leaf-Pink		Gold
		Leaf-Ocean Blue	Leaf-Red		Silver
		Leaf-Grey	Leaf-Violet		
		Leaf-Green	Leaf-White		
		Leaf Lavender	Leaf-Yellow		

LEAF

Example: item number **Leaf-40** + finish suffix **-PT** =**Leaf-40-PT**

Item	Description	Dimensions	w	inches d	Shipping Weight
Leaf 40	Coat Rack Favorites <i>(set of 4)</i>	Outside	2 ¹ / ₄	2 ³ / ₈	2 lbs. per set



NOTE: Package includes, Grey, Blue, Lavender, Yellow

List Price
Selection

-PT
Paint

323